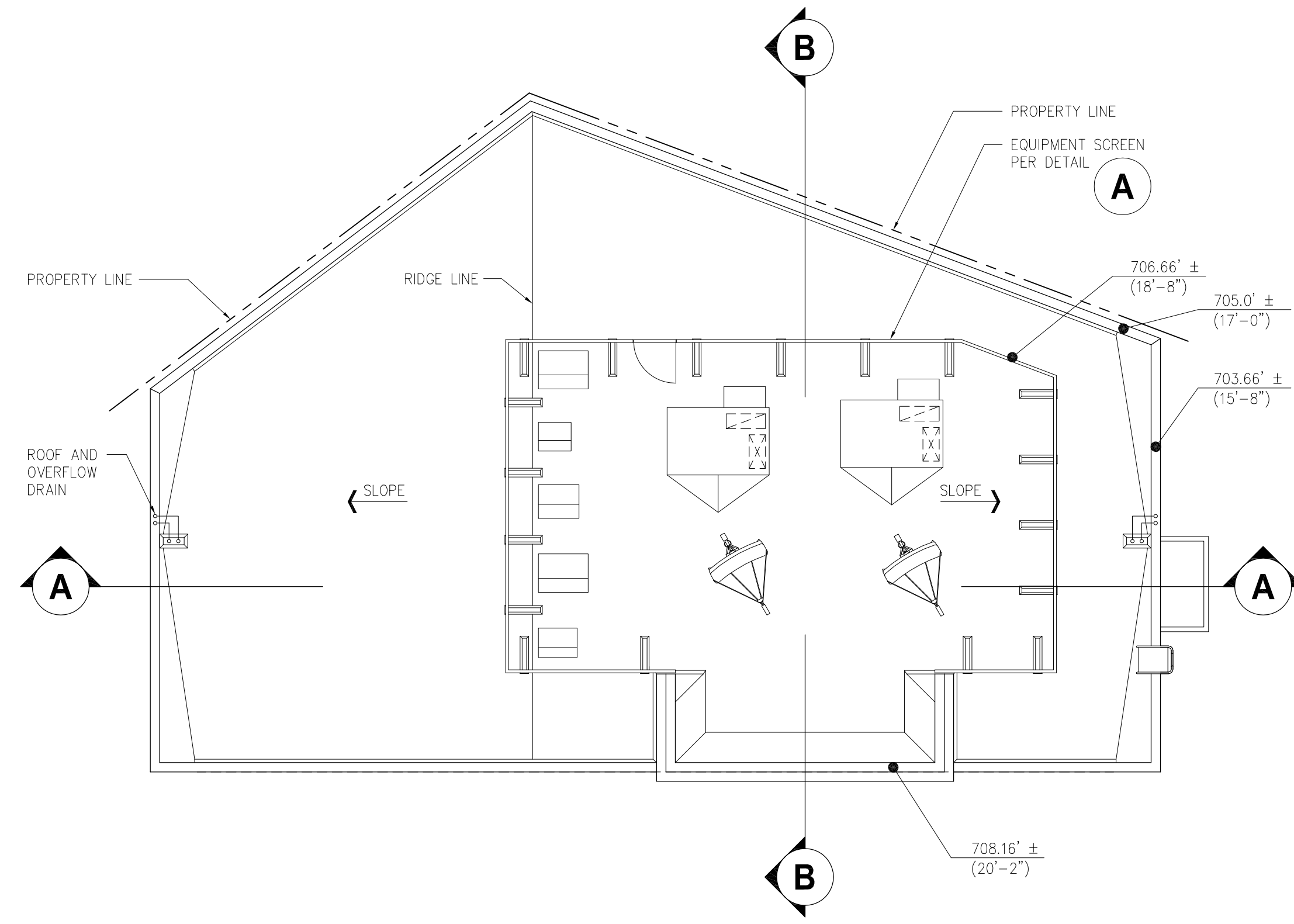
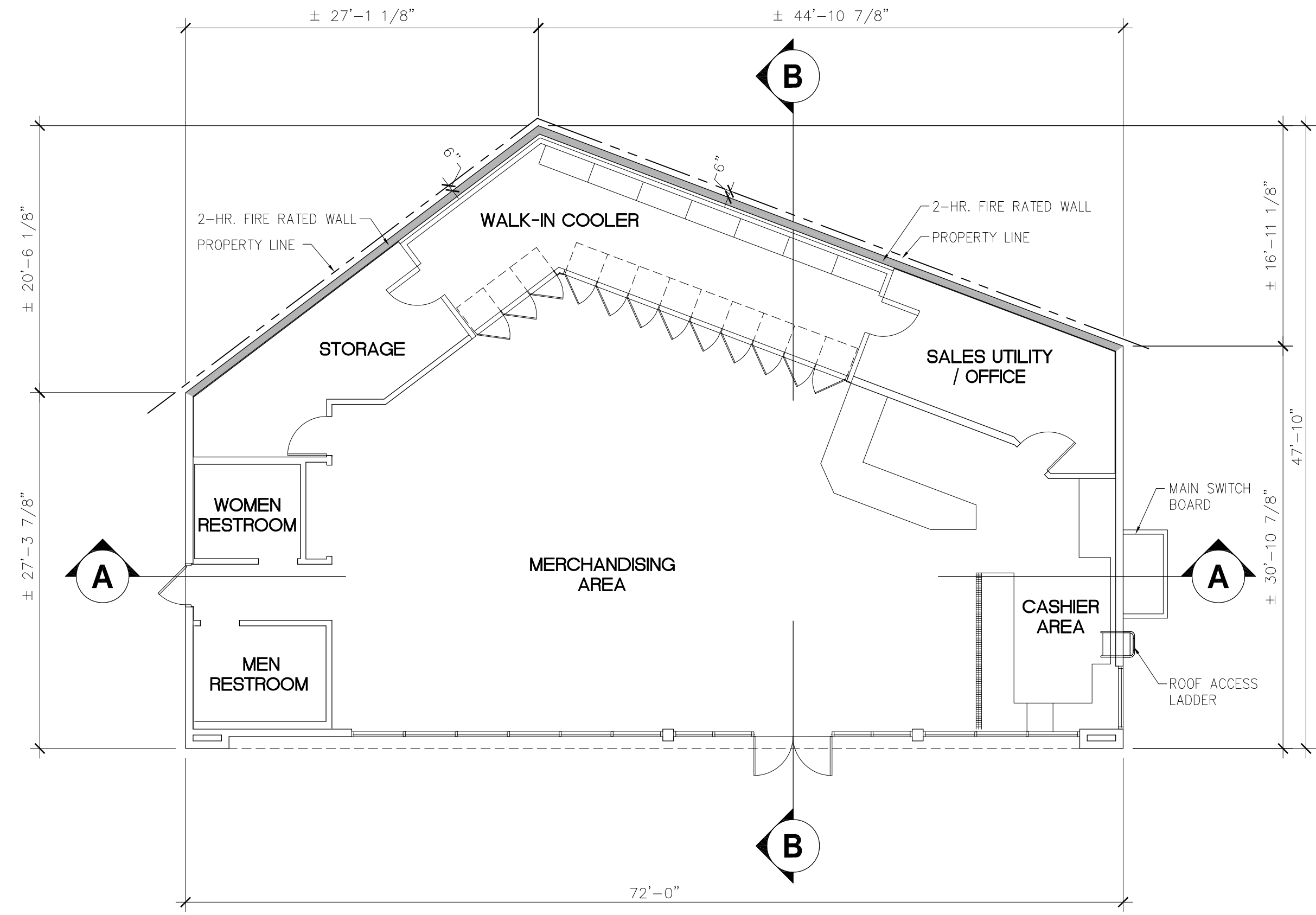


**A** EQUIPMENT SCREEN DETAIL  
SCALE: 1/8"=1'-0"

SP01003A-07001-DWG212



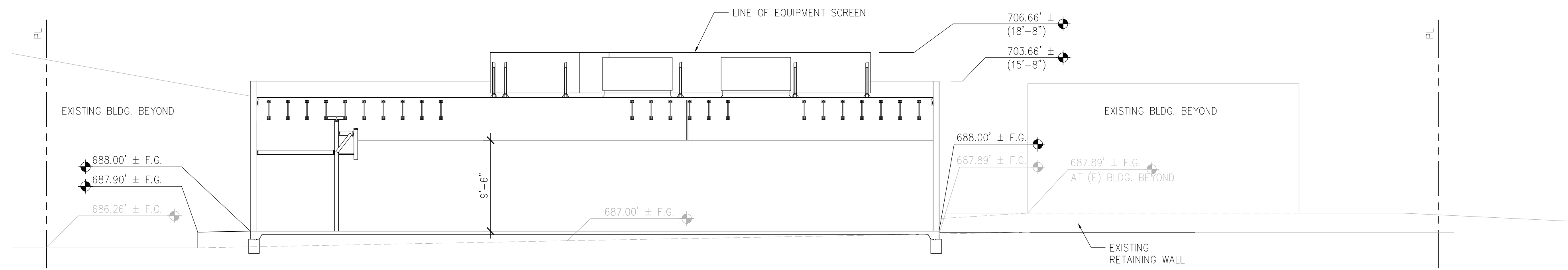
ROOF PLAN  
SCALE: 1/8"=1'-0"



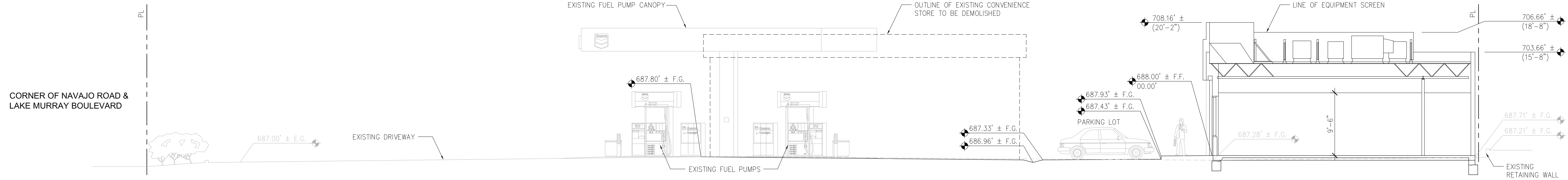
FLOOR PLAN  
SCALE: 1/8"=1'-0"

**PRIOR APPROVAL:  
NEIGHBORHOOD USE PERMIT: 829648  
PROJECT NO.: 231825**

LEGEND	
	NEW GRADE/ ELEVATION
	EXISTING GRADE/ ELEVATION



SECTION A-A  
SCALE: 1/8"=1'-0"



SECTION B-B  
SCALE: 1/8"=1'-0"

CORNER OF NAVAJO ROAD & LAKE MURRAY BOULEVARD

THIS SET OF DOCUMENTS IS FOR PLANNING LEVEL USE ONLY. LAYOUT IS SUBJECT TO CHANGE. NOT TO BE USED FOR CONSTRUCTION. © DOCUMENT COPYRIGHT NOTICE: THESE DRAWINGS ARE INSTRUMENT OF SERVICE AND SHALL REMAIN THE PROPERTY OF LYONS WARREN, ENGINEERS + ARCHITECTS. NO PART OF THESE DRAWINGS SHALL BE REPRODUCED OR TRANSMITTED IN ANY FORM OR BY ANY MEANS, ELECTRONIC OR MECHANICAL, WITHOUT THE WRITTEN AUTHORIZATION AND APPROPRIATE COMPENSATION TO LYONS WARREN, ENGINEERS + ARCHITECTS.

**LYONS WARREN**  
engineers + architects  
9455 Ridgehaven Court  
Suite 200  
San Diego, CA 92123-1649  
858.573.8999  
858.573.8998 fax  
www.lyonswarren.com

**PROJECT:**  
LAKE MURRAY C - STORE (C&M #108)  
8780 LAKE MURRAY BLVD.  
SAN DIEGO, CA 92119

**CLIENT:**  
C&M OIL COMPANY, LLC  
16868 A STREET  
HUNTINGTON BEACH, CA 92647

Sheet Contents:  
FLOOR PLAN,  
ROOF PLAN &  
SITE SECTIONS

Prepared by:	LYONS WARREN, ENGINEERS + ARCHITECTS	REVISION 12:	_____
Name:	9455 RIDGEHAVEN COURT, SUITE 200	REVISION 11:	_____
Address:	SAN DIEGO, CA 92123-1649	REVISION 10:	_____
Phone:	(858) 573-8999	REVISION 09:	_____
Fax:	(858) 573-8998	REVISION 08:	_____
Project Address:	8780 LAKE MURRAY BLVD.	REVISION 07:	_____
	SAN DIEGO, CA 92119	REVISION 06:	_____
Project Name:	Lake Murray C-Store	REVISION 05:	_____
Sheet Title:	FLOOR PLAN, ROOF PLAN & SITE SECTIONS	REVISION 04:	_____
		REVISION 03:	_____
		REVISION 02:	_____
		REVISION 01:	_____
		ORIGINAL DATE:	04/10/2012
		Sheet 2 of 3	
		Project Number:	T.B.D.

LW Job No. GMI1201 C  
Scale: AS NOTED

**A1.0**