

EAST ELEVATION

SCALE: 1/4"=1'-0"

EXTERIOR FINISH SCHEDULE

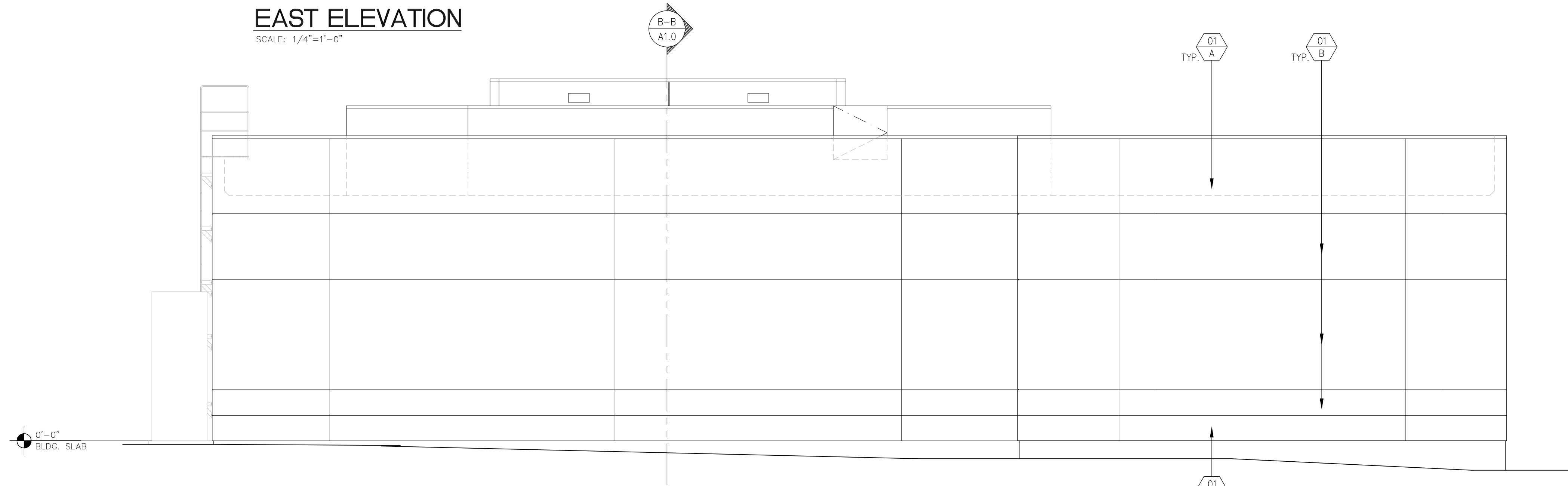
01 MATERIAL/FINISH
A COLOR

MATERIAL/FINISH:

- 01 EXTERIOR PLASTER FINISH
- 02 STOREFRONT
- 03 BUILDING SIGNAGE
- 04 ROOF ACCESS LADDER
- 05 ELECTRICAL SWITCH GEAR
- 06 EXTERIOR DOORS

COLOR:

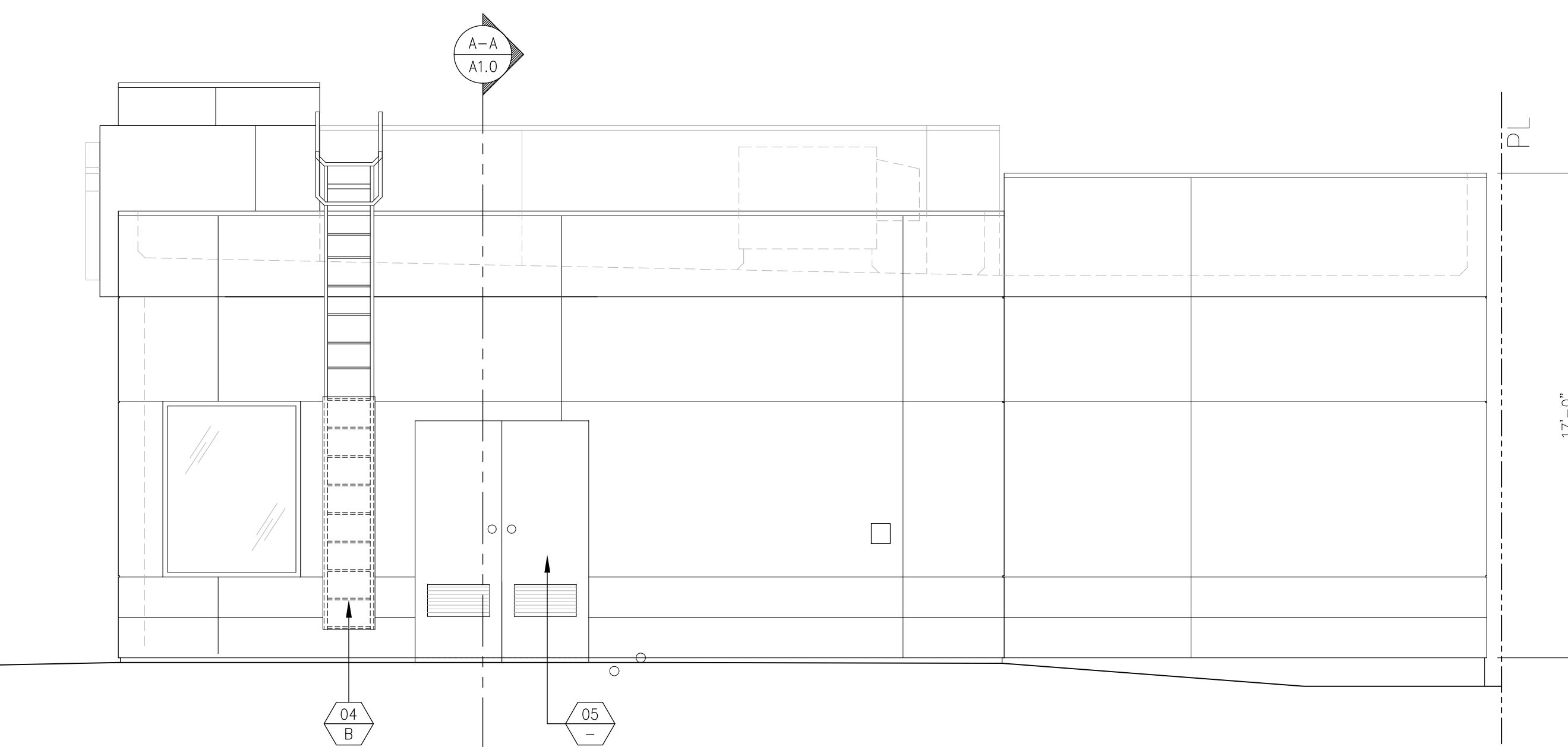
- A CAFE AU LAIT (SEMI GLOSS) # NCS-101-PPG
- B NUTMEG (SEMI GLOSS) # 326-6
- C CHILLED WINE (SEMI GLOSS) # 438-7
- D MOCHA (SEMI GLOSS) # NCS-104-PPG
- E DARK BRONZE ANODIZED



WEST ELEVATION

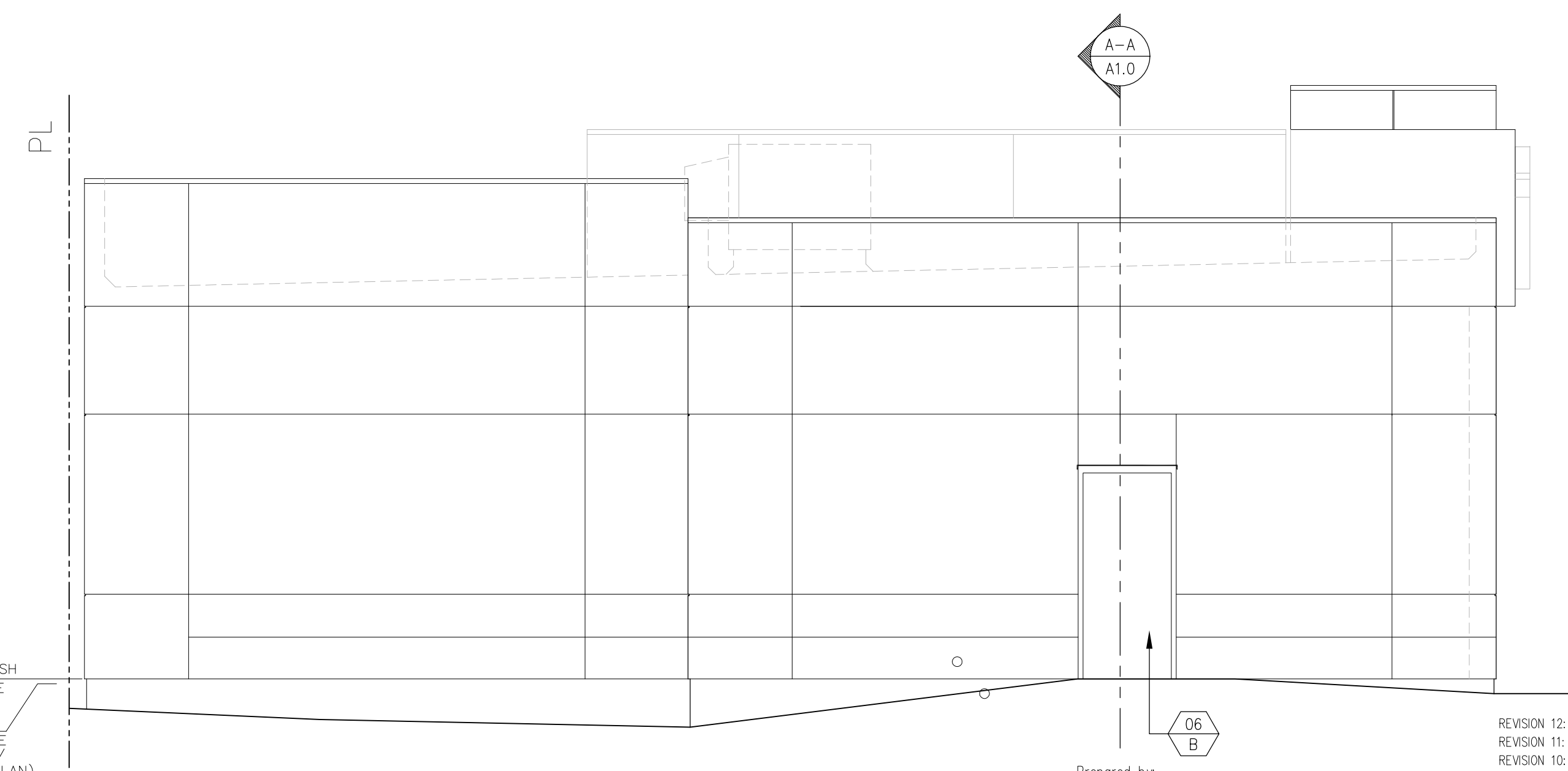
SCALE: 1/4"=1'-0"

**PRIOR APPROVAL:
NEIGHBORHOOD USE PERMIT: 829648
PROJECT NO.: 231825**



NORTH ELEVATION (NAVAJO ROAD)

SCALE: 1/4"=1'-0"



SOUTH ELEVATION (LAKE MURRAY BLVD)

SCALE: 1/4"=1'-0"

Prepared by:
Name: LYONS WARREN, ENGINEERS + ARCHITECTS
Address: 9455 RIDGEHAVEN COURT, SUITE 200
SAN DIEGO, CA 92123-1649
Phone: (858) 573-8999
Fax: (858) 573-8998
Project Address: 8780 LAKE MURRAY BLVD.
SAN DIEGO, CA 92119
Project Name: Lake Murray C-Store
Sheet Title: EXTERIOR ELEVATIONS

REVISION 12:	
REVISION 11:	
REVISION 10:	
REVISION 09:	
REVISION 08:	
REVISION 07:	
REVISION 06:	
REVISION 05:	
REVISION 04:	
REVISION 03:	
REVISION 02:	
REVISION 01:	
ORIGINAL DATE:	04/10/2012
Sheet 3 of 3	
Project Number:	T.B.D.

THIS SET OF DOCUMENTS IS FOR PLANNING LEVEL USE ONLY. LAYOUT IS SUBJECT TO CHANGE. NOT TO BE USED FOR CONSTRUCTION.
 © DOCUMENT COPYRIGHT NOTICE: THESE DRAWINGS ARE INSTRUMENT OF SERVICE AND SHALL REMAIN THE PROPERTY OF LYONS WARREN, ENGINEERS + ARCHITECTS. NO PART OF THESE DRAWINGS SHALL BE USED FOR ANY OTHER PROJECT OR AS AN EXTENSION TO THIS PROJECT WITHOUT WRITTEN AUTHORIZATION AND APPROPRIATE COMPENSATION TO LYONS WARREN, ENGINEERS + ARCHITECTS.

PROJECT:
 LAKE MURRAY C - STORE (C&M #108)
 8780 LAKE MURRAY BLVD.
 SAN DIEGO, CA 92119

CLIENT:
 C&M OIL COMPANY, LLC
 16868 A STREET
 HUNTINGTON BEACH, CA 92647

Sheet Contents:
 EXTERIOR ELEVATIONS

LW Job No.: GMI1201 C
Scale: AS NOTED

LYONS WARREN
 engineers + architects
 9455 Ridgehaven Court
 Suite 200
 San Diego, CA 92123-1649
 (858) 573-8999
 (858) 573-8998 fax
 www.lyonswarren.com

A2.0